

AIR FORCE T.O. 35C2-3-442-14
 ARMY TMS-6115-600-24P
 NAVY NAVFAC P-8-628-24P
 MARINE CORPS SL-4-07464B

SECTION II. REPAIR PARTS FOR ORGANIZATIONAL, INTERMEDIATE (FIELD)
 (DIRECT AND GENERAL SUPPORT) AND DEPOT MAINTENANCE

(1) ILLUSTRATION		(2) SMR CODE				(3) USMC		(4)	(5) DESCRIPTION		(6)	(7)	(8)
a	b	a	b	c	d	a	b	NATIONAL STOCK NUMBER	REF NUMBER & MFR CODE	USABLE ON CODE	U/M	QTY INC IN UNIT	USMC QTY PER EQUIP
FIG NO.	ITEM NO.	ARMY	AIR FORCE	NAVY	USMC	SSI	REPL FACTOR						
12									GROUP 02 - DC ELECTRICAL AND CONTROL SYSTEM				
									SPEED SWITCH AND MAGNETIC PICKUP				
12	1	PAFZZ	PAOZZ	PAFZZ	PAFZZ	D	.008	5305-00-071-2241	SCREW, HEX HEAD MS90725-10	96906	EA	4	10
12	2	PAFZZ	PAOZZ	PAFZZ	PAFZZ	D	.010	5310-00-809-4058	WASHER, FLAT MS27183-10	96906	EA	4	252
12	3	PAFZZ	PAOZZ	PAFZZ	PAFZZ	D	.008	5310-00-483-8792	NUT, SELF-LOCKING MS17829-4C	96906	EA	4	167
12	4	APF	APF	APF	APF				SPEED SWITCH ASSY, S9-1,S9-3 76-4123-02	30554	EA	1	1
12	5	PAFZZ	PAFZZ	PAFZZ	PAFZZ	D	.008	5305-00-036-0903	SCREW AND WASHER 69-662-4 61-040741-40-0142B-0542B	30554 78189	EA	8	54
12	6	PAFZZ	PAFZZ	PAFZZ	PAFZZ	D	.008	5310-00-836-3520	NUT AND WASHER 69-561-1 511-041800-00	30554 78189	EA	8	66
12	7	PAFZZ	PAFZZ	PAFZZ	PAFZZ	D	.030	5935-00-806-4588	CONNECTOR, J62 MS3102R16-10P	96906	EA	1	2
12	8	PAFZZ	PAFZZ	PAFZZ	PAFZZ	D	.030	5935-00-721-0490	CONNECTOR, J37 MS3102R18-1P	96906	EA	1	1
12	9	PAFZZ	PAFZZ	PAFZZ	PAFZZ	D	.005	5935-00-103-5359	SOCKET, RELAY 69-547 VB8-1UA11-800P300-1147	30554 05574	EA	1	3
12	10	PAFZZ	PAFZZ	PAFZZ	PAFZZ	D	.050	5945-00-435-1833	RELAY, K23 MS757/23-003	81349	EA	1	8
12	11	PAFZZ	PAFZZ	PAFZZ	PAFZZ	D	.008	5305-00-036-6972	SCREW AND WASHER 69-662-20 61-060841-40-0142B-0542B	30554 78189	EA	2	12
12	12	PAFZZ	PAFZZ	PAFZZ	PAFZZ	D	.008	5310-00-063-7360	NUT AND WASHER 69-561-2 511-061800-00	30554 78189	EA	2	73
12	13	MOO	MOO	MOO	MOO				BRACKET, RELAY MOUNTING 76-4125	30554	EA	1	1
12	14	PAFZZ	PAFZZ	PAFZZ	PAFZZ	D	.008	5305-00-036-6967	SCREW AND WASHER 69-662-16 61-060441-40-0142B-0542B	30554 78189	EA	2	14
12	15	APF	APF	APF	APF				DIODE ASSY 71-4126	30554	EA	1	1
12	16	PAFZZ	PAFZZ	PAFZZ	PAFZZ	D	.050	5940-00-557-1629	LUG, TERMINAL MS25036-149	96906	EA	3	21
12	17	PAFZZ	PAFZZ	PAFZZ	PAFZZ	D	.005	5961-00-924-6981	DIODE, CR29 JAN1N4245	81349	EA	2	4
12	18	MDF	MDF	MDF	MDF				PLATE, OVERSPEED RESET 71-4506	30554	EA	1	1
12	19	PAFZZ	PAOZZ	PAFZZ	PAFZZ	D	.050	5945-01-131-0763	SPEED SWITCH 76-4124-02	30554	EA	1	1
12	20	PAFZZ	PAFZZ	PAFZZ	PAFZZ	D	.005	5950-01-136-1975	MAGNETIC PICKUP 81-49-04 SA-2171	30554 78388	EA	1	1

AIR FORCE T.O. 35C2-3-442-14
ARMY TM5-6115-600-24P
NAVY NAVFAC P-8-628-24P
MARINE CORPS SL-4-07464B

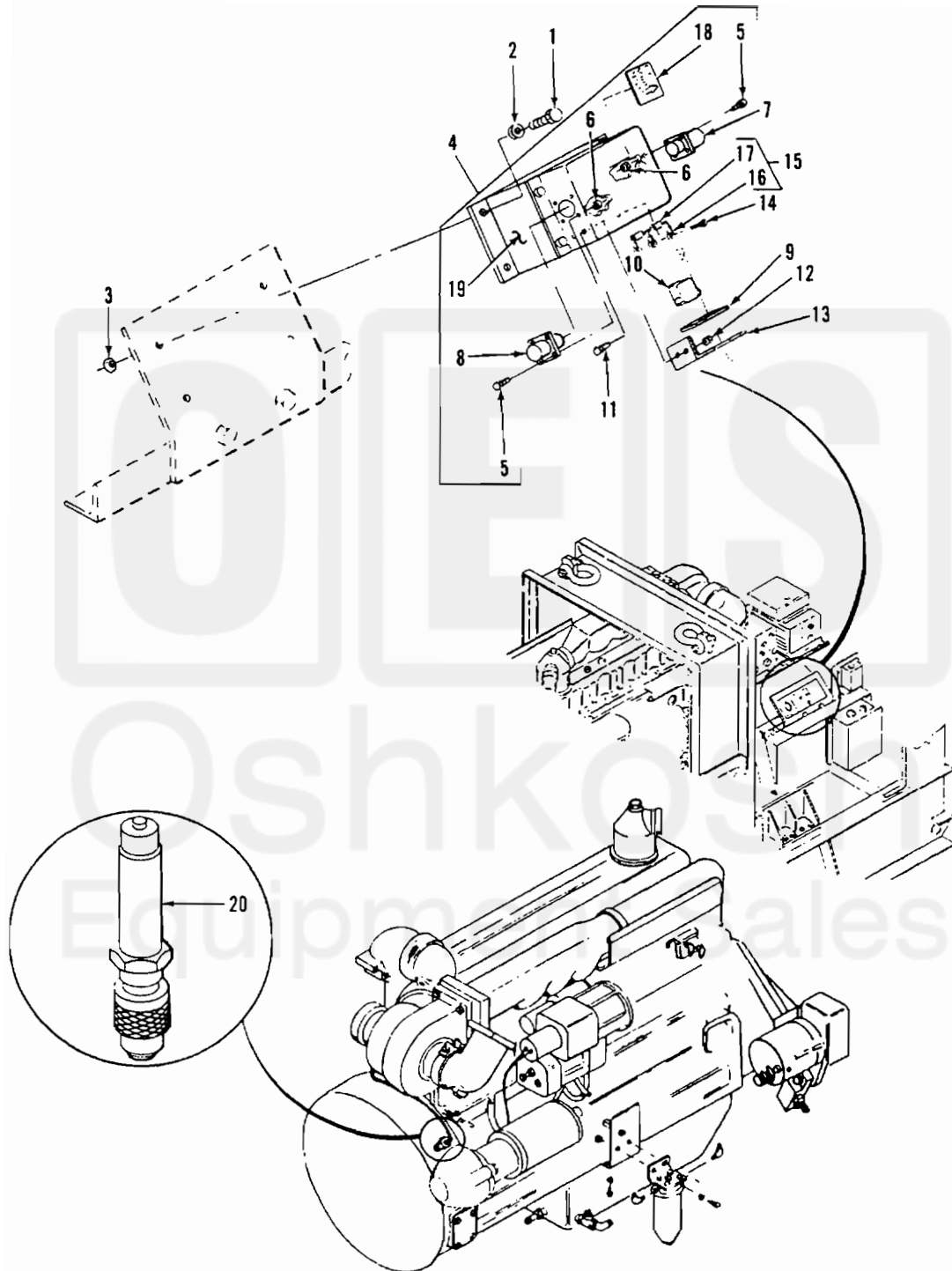


Figure 12. Speed Switch and Magnetic Pickup

AIR FORCE T.O. 35C2-3-442-14
 ARMY TM5-6115-600-24P
 NAVY NAVFAC P-8-628-24P
 MARINE CORPS SL-4-07464B

SECTION II. REPAIR PARTS FOR ORGANIZATIONAL, INTERMEDIATE (FIELD)
 (DIRECT AND GENERAL SUPPORT) AND DEPOT MAINTENANCE

(1) ILLUS- TRATION		(2) SMR CODE				(3) USMC		(4)	(5) DESCRIPTION		(6)	(7)	(8)
a	b	a	b	c	d	a	b	NATIONAL STOCK NUMBER	REF NUMBER & MFR CODE	USABLE ON CODE	U/M	QTY INC IN UNIT	USMC QTY PER EQUIP
FIG NO.	ITEM NO.	ARMY	AIR FORCE	NAVY	USMC	SSI	REPL FACTOR						
13									GROUP 02 - DC ELECTRICAL AND CONTROL SYSTEM				
									SPEED SWITCH & MAGNETIC PICK-UP ALTERNATE P/N 90-4002				
13	1	PAFZZ	PAOZZ	PAFZZ	PAFZZ		.008	5305-00-071-2241	SCREW, HEX HEAD MS90725-10	96906	EA	4	10
13	2	PAFZZ	PAOZZ	PAFZZ	PAFZZ		.010	5310-00-809-4058	WASHER, FLAT MS27183-10	96906	EA	4	252
13	3	PAFZZ	PAOZZ	PAFZZ	PAFZZ		.008	5310-00-483-8792	NUT, SHELF-LOCKING MS17829-4C	96906	EA	4	167
13	4	PAFZZ	PAOZZ	PAFZZ	PAFZZ		.080	5930-01-342-8639	SPEED SWITCH ASSY 90-4002-2	30554	EA	1	1
13	5	PAFZZ	PAOZZ	PAFZZ	PAFZZ		.005	6695-01-136-1975	MAGNETIC PICK-UP SA-2171 SB-1050	30554 78388	EA	1	1

AIR FORCE T.O. 35G2-3-442-14
ARMY TMS-6115-600-24P
NAVY NAVFAC P-8-628-24P
MARINE CORPS SL-4-07464B

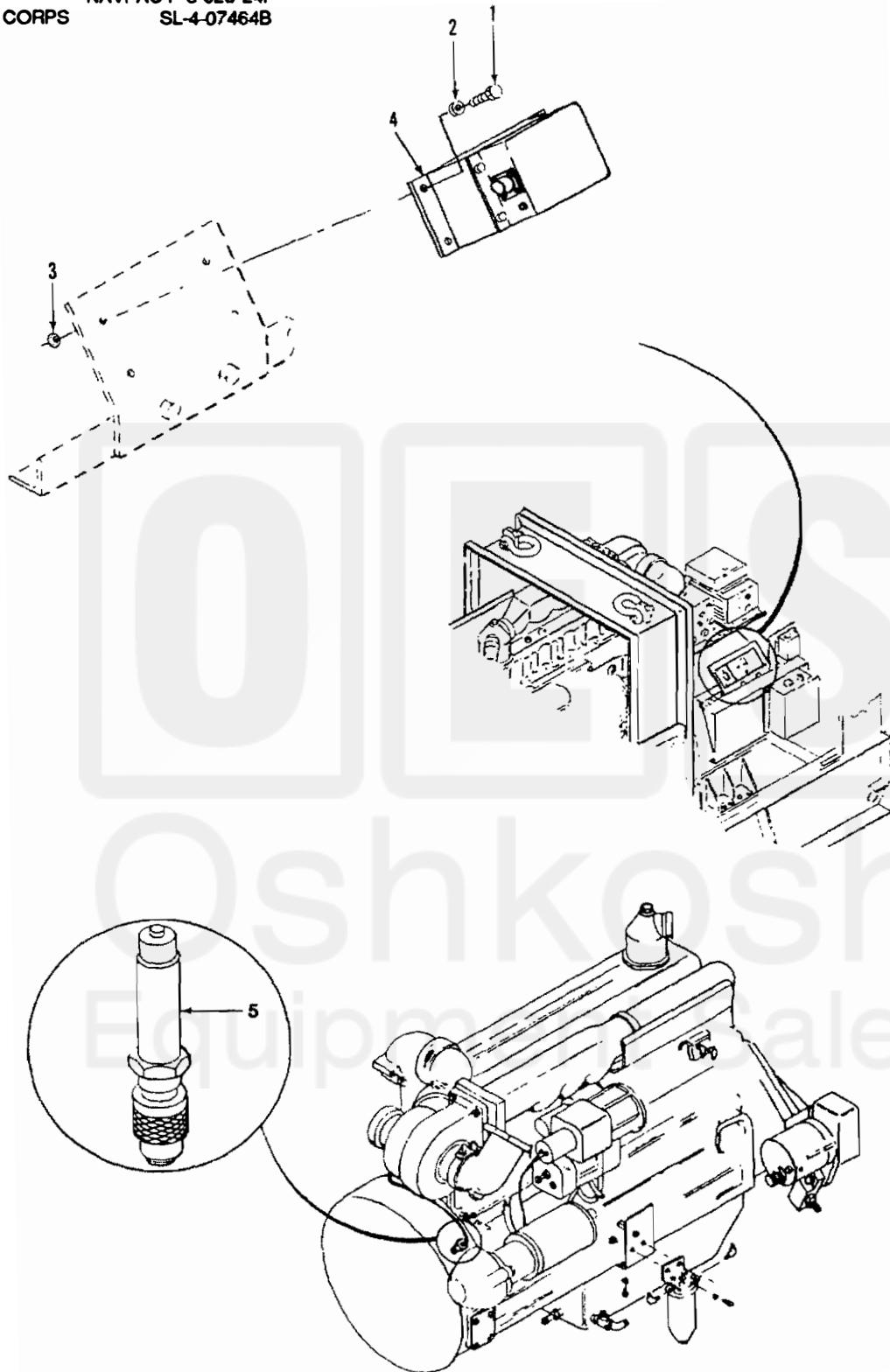


Figure 13. Speed Switch and Magnetic Pickup
(ALTERNATE P/N 90-4002)